



GAT MONTHLY MEMBERSHIP PROGRESS REPORT

Results as of: 4/30/2022

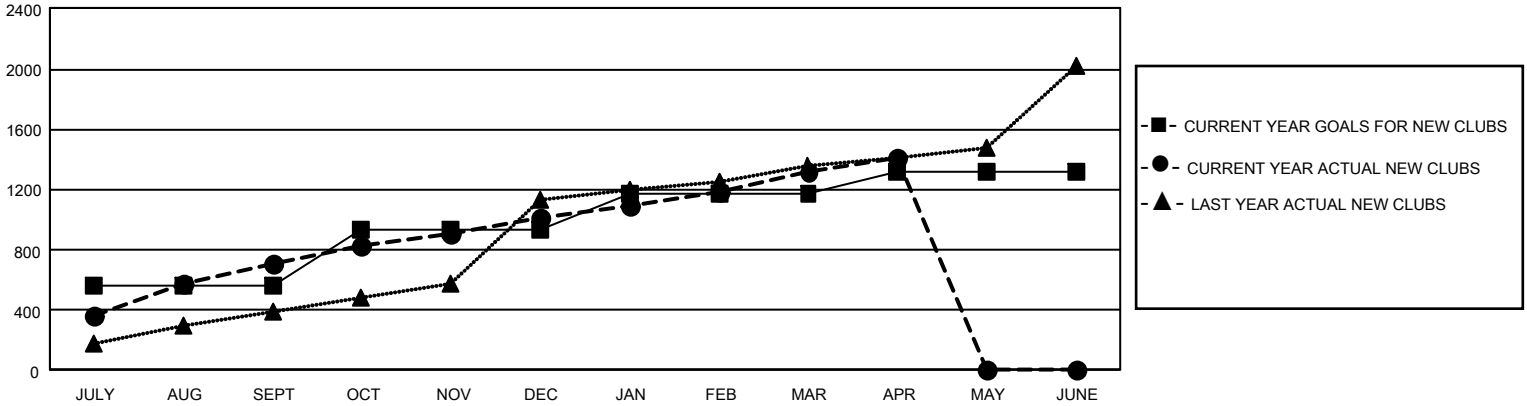
GAT Constitutional Area 6

REPORT DOES NOT INCLUDE CLUBS IN UNDISTRICTED AREAS.

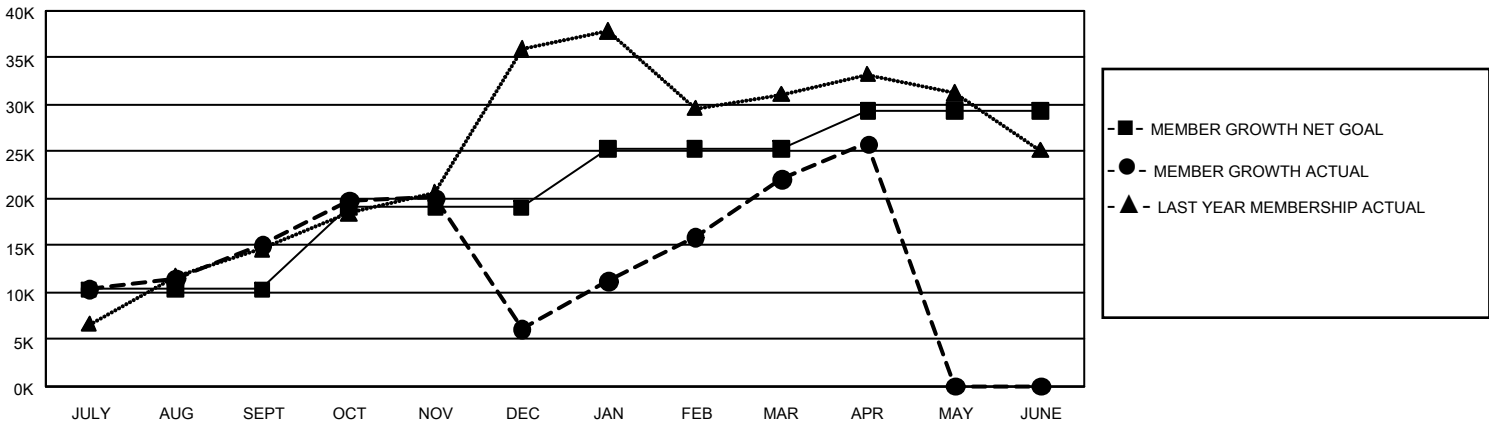
Clubs			
RESULTS FOR 2021-2022			
QUARTER	NEW CLUB GOAL	NEW CLUBS	DROPPED CLUBS
JULY/AUG/SEPT	1,677	710	405
OCT/NOV/DEC	1,125	298	376
JAN/FEB/MAR	726	315	95
APR/MAY/JUNE	420	84	7

Members			
RESULTS FOR 2021-2022			
QUARTER	MEMBER GROWTH NET GOAL	MEMBER GROWTH ACTUAL	DROPPED MEMBERS ACTUAL (including transfers)
JULY/AUG/SEPT	10324	32,361	15,175
OCT/NOV/DEC	8728	18,070	26,100
JAN/FEB/MAR	6213	25,277	5,965
APR/MAY/JUNE	4051	6,571	2,391

GOALS AND ACTUAL NEW CLUBS CUMULATIVE



GOALS AND ACTUAL MEMBERS CUMULATIVE



DROPPED CLUBS: 880	7,667 CLUBS OF 13,387 ADDED 1 OR MORE NEW MEMBERS	GENDER DISTRIBUTION
DROPPED MEMBERS	CLICK HERE FOR CUMULATIVE MEMBERSHIP DATA	MALE 280,107 (71.79%)
		FEMALE 110,002 (28.19%)
		NON BINARY 21 (0.01%)
		PREFER NOT TO ANSWER 59 (0.02%)
DECEASED 1,034		TOTAL FAMILY UNIT MEMBERS 212,722
CLUB CANCELLED 17,021		FAMILY MEMBERS PAYING HALF DUES 133,578
OTHER 31,599		
TOTAL 49,654		